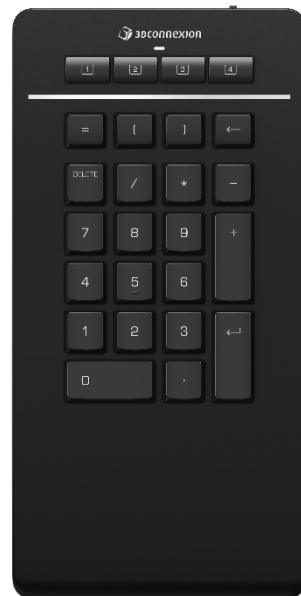


Manual

3Dconnexion® Numpad Pro



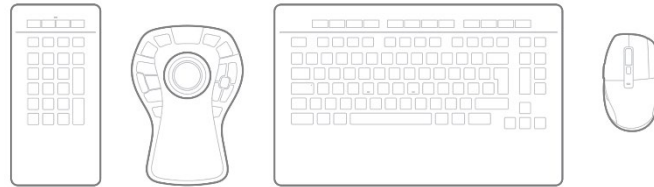
Driver Version: 3DxWare 10.8.8 and higher

Table of Content

QuickStart Guide	3
Desktop Setup.....	3
Installation.....	3
Feature Guide	4
3Dconnexion Settings	6
Advanced Settings	7
Buttons	7
Assigning Quick Macros to buttons	8
Assigning Commands using the flyout window	8
Creating Macros	9
Creating Radial Menus.....	9
3Dconnexion Home.....	10
Technical Specifications.....	11

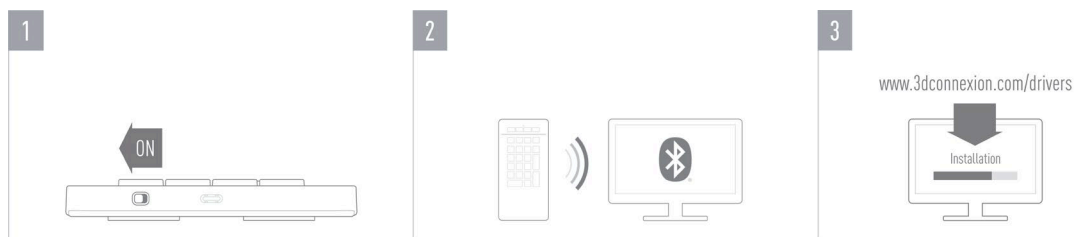
QuickStart Guide

Desktop Setup



Place the Numpad Pro, so that it fits your preferences and tasks. For a natural and ergonomic posture, we recommend placing it at the opposite side of your CadMouse.

Installation



1. Turn on the Numpad Pro

Turn on the device with the power switch located on the right rear side of the Numpad.

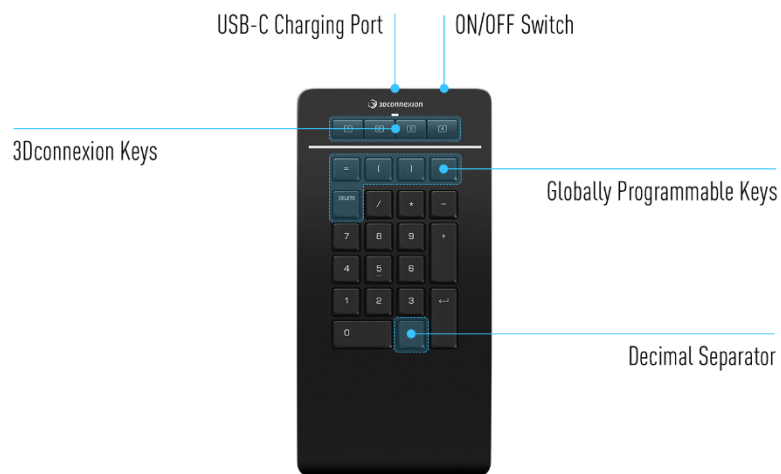
2. Pair with Computer

Make sure your computer's Bluetooth module is turned on and pair the Numpad with your computer.

3. Download and install the latest software package

Make sure you have the latest 3Dconnexion software installed. The latest version can be downloaded at 3dconnexion.com/drivers.

Feature Guide



3Dconnexion Keys

The Numpad Pro features four additional programmable function keys, located above the standard keys. It instantly recognizes the applications you are using, as well as their environments and automatically assigns the most used commands to the keys. Note: The 3Dconnexion driver (3DxWare) is needed to make the 3Dconnexion Keys work.

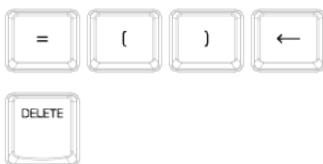


On-Screen Display

After installing the driver, the OSD for the Numpad Pro is hidden by default. In order to enable the OSD open the **3Dconnexion Settings**, select the Numpad Pro, click on **Buttons**, and activate the checkbox **Always show On-Screen Display**.



Globally Programmable Keys



In addition to the 3Dconnexion Keys, your Numpad Pro provides five Globally Programmable Keys, whose function remains the same system-wide (no matter in which application you are currently working). They can be easily customized in the **3Dconnexion Settings**.

Decimal Separator



You can specify the Decimal Separator of your Numpad Pro as either a point or a comma to suit your preference in each application in the **3Dconnexion Settings**.

Status LED

The Numpad Pro features a status LED that shows the battery status as well as the connection status.

▪ Battery status:

Immediately after turning on the device or after wake-up from sleep, the LED will show the current charge level:

- **Green** The Numpad Pro is sufficiently charged.
- **Red** The Numpad Pro has less than 10% charge and requires charging.

▪ Pairing and connection status:

After the battery status is displayed, the device will show the current connection and pairing mode.

- White (steady) Successfully connected in 3Dconnexion wireless mode.
- White (pulsing) Ready for 3Dconnexion wireless connection.
- **Blue** (steady) Successfully connected in Bluetooth mode.
- **Blue** (pulsing) Ready for Bluetooth connection.

After the device has been successfully connected, the LED turns off.

Charge your Numpad Pro

Connect your Numpad Pro to a charging port on your computer by using the included USB cable. As long as the Numpad Pro is charging, the status LED will flash green, and it will turn solid green when it is fully charged.

Connect your Numpad Pro



The Numpad Pro can be connected via Bluetooth® (Swift Pair included), the Keyboard Pro, or USB cable. The wireless connection of your Numpad Pro is always encrypted in order to ensure the security of your data.

Note: To pair your Numpad Pro, first turn on the device and the status LED on your Numpad Pro will start flashing blue. Next, make sure Bluetooth is active on your PC and in discover mode. Now choose your device from the list of available devices and pair it to your PC.

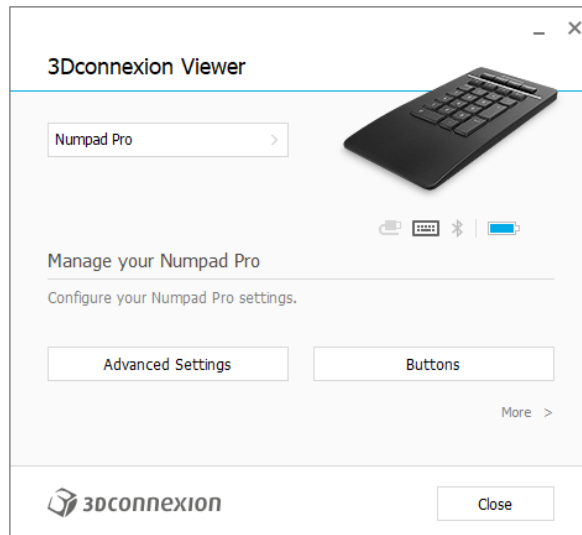
To benefit from the simplified Bluetooth® Swift Pair, make sure your computer's Bluetooth module is turned on and the Numpad is close to it when it is switched on. Then enter the displayed code on your Numpad and confirm with Enter to complete the pairing.

3Dconnexion Settings

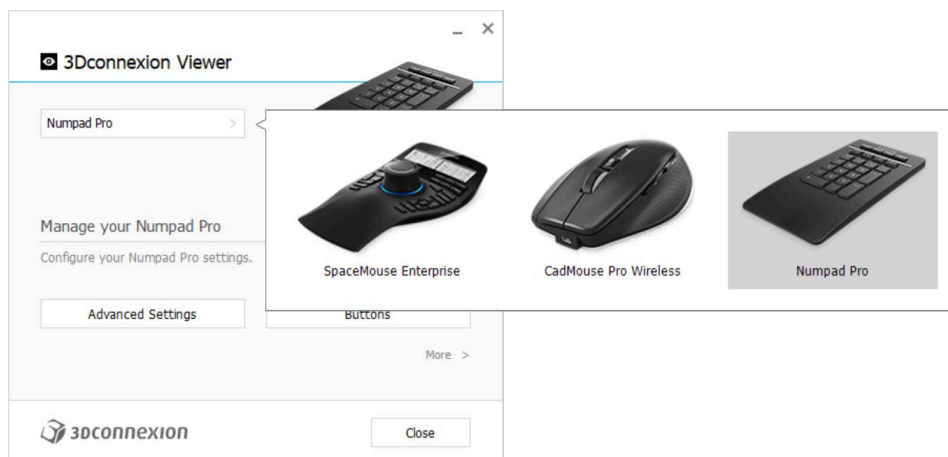


You can access the 3Dconnexion Settings panel either via 3Dconnexion Home (on your desktop), the icon in your notification area (systray), or the Windows start menu.

The name of the active application is displayed at the top of the panel. Any setting change is relevant to this application only.

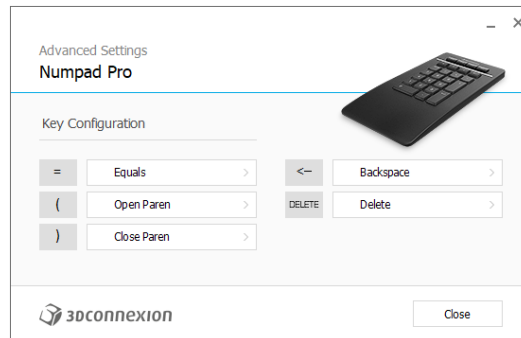


If multiple 3Dconnexion devices are connected, you can select the desired product to configure by clicking on the flyout button at the top left of the panel.



Advanced Settings

Settings that can be configured in the **Advanced Settings** panel are not application-specific but are the same for all applications system-wide.

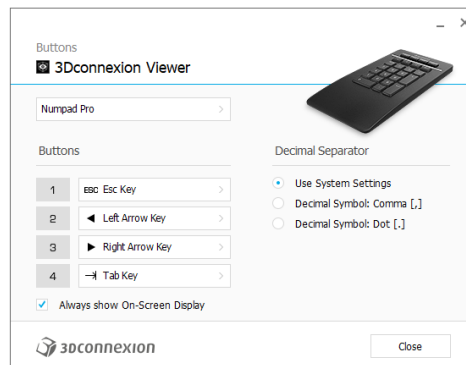


Key Configuration

By clicking on the > arrow on the right-hand side of the key field you open a flyout window with the help of which you can assign commands, macros or radial menus to the keys (Assigning Commands using the flyout window).

Buttons

The **Buttons** panel within 3Dconnexion Settings allows you to assign commands, macros or radial menus to the programmable 3Dconnexion Keys, which are placed on top of your Numpad. The name of the active application is displayed at the top of the panel. Any setting change is relevant to this application only. While you are working in an application, the On-Screen Display always shows you the current assignment of the keys for this app. Uncheck **Always show On-Screen Display** to hide the OSD.



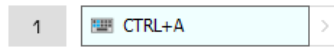
A note about Environment sensitivity: Some applications feature environment sensitive key mapping. In those applications you can have different key assignments depending on the current active environment.

Decimal Separator

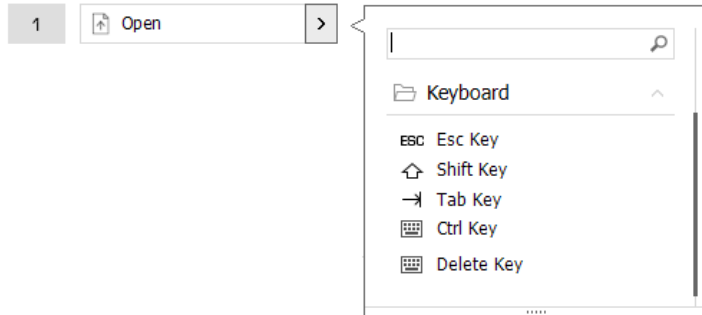
You can decide whether the decimal separator is automatically selected based on the system settings or whether you manually choose the **Comma** or **Dot** setting for a certain application.

Assigning Quick Macros to buttons

Click on the text in the key field and press the required key or key combination to quickly assign a keystroke or macro to a 3Dconnexion Key.



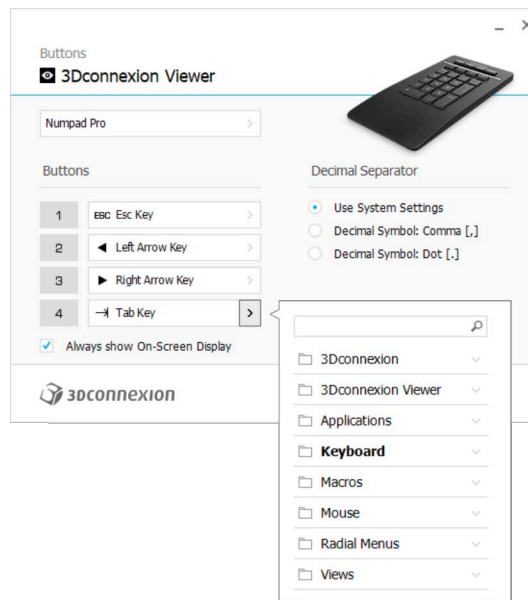
When a macro is created, it always sends a **press and release** command. If you want to assign a **press and hold** command instead (for example Ctrl or Shift), you should use the **Keyboard** command category in the flyout window.



Assigning Commands using the flyout window

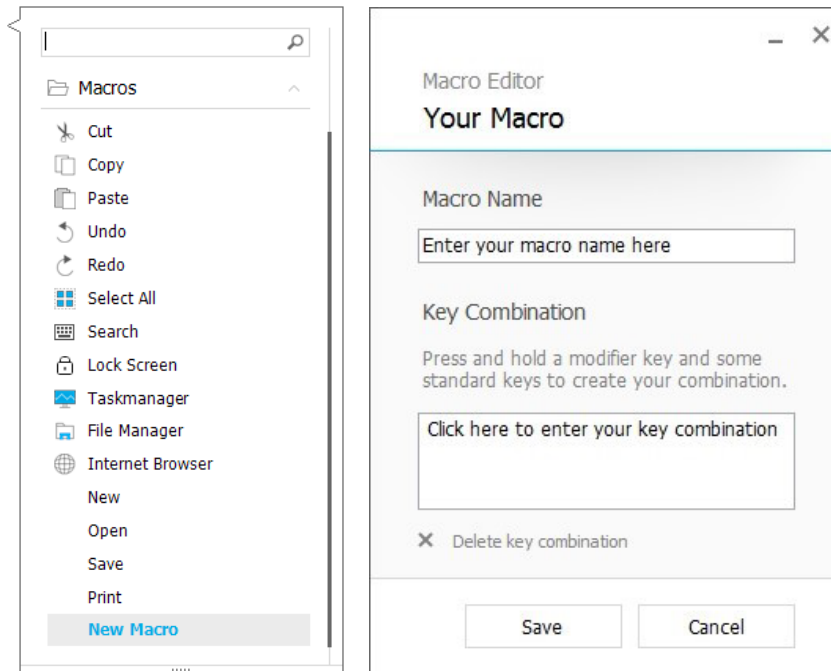
Clicking on the > arrow on the right-hand side of the key field opens a flyout window for that Numpad key:

The category of the command that it is currently assigned to is highlighted in bold. The flyout window allows you to browse or search for commands in different categories such as 3Dconnexion or application commands. When you select a command by clicking on it, it is automatically assigned to the Numpad key.



Creating Macros

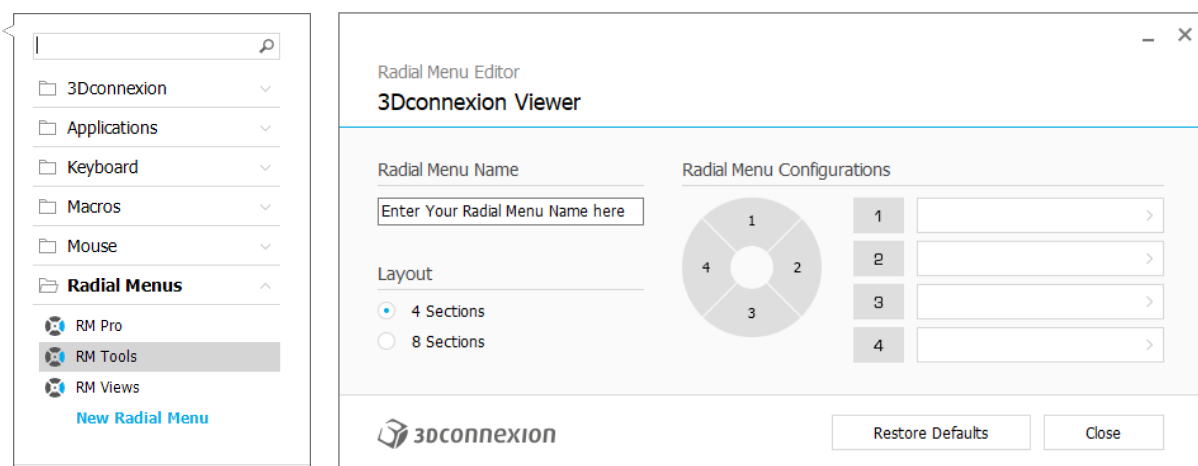
First click on the > arrow on the right-hand side of the key field, then expand the **Macro** category and click on **New Macro**. This opens the macro editor where you can assign a name for your macro and a sequence of keystrokes in the corresponding fields. Clicking on **Save** will automatically assign the new macro to the button from where you opened the panel.



Creating Radial Menus

First click on the > arrow on the right-hand side of the key field, then expand the **Radial Menu** category and click on **New Radial Menu**.

This brings up the radial menu editor where you can assign a name and commands to the different sections. Your new radial menu will be automatically assigned to the key from where you opened the panel.



3Dconnexion Home



Once you have successfully installed the latest 3Dconnexion driver, 3Dconnexion Home gives you access to various 3Dconnexion apps:



Trainer:

Learn how to quickly use the 3Dconnexion SpaceMouse.



Manuals:

Here you can find the manuals for all 3Dconnexion products.



Settings:

Open the settings panel to customize your 3Dconnexion devices.



Viewer:

Use the 3Dconnexion Viewer to review 3D models.

Supported formats (.stp, .step, .igs, .iges, .obj, .stl, .ply, .jt, .glTF).



Demo:

Test and practice your skills by assembling the landing gear of an aircraft.



Registration:

[Register](#) your product after the installation to benefit from 3Dconnexion services.



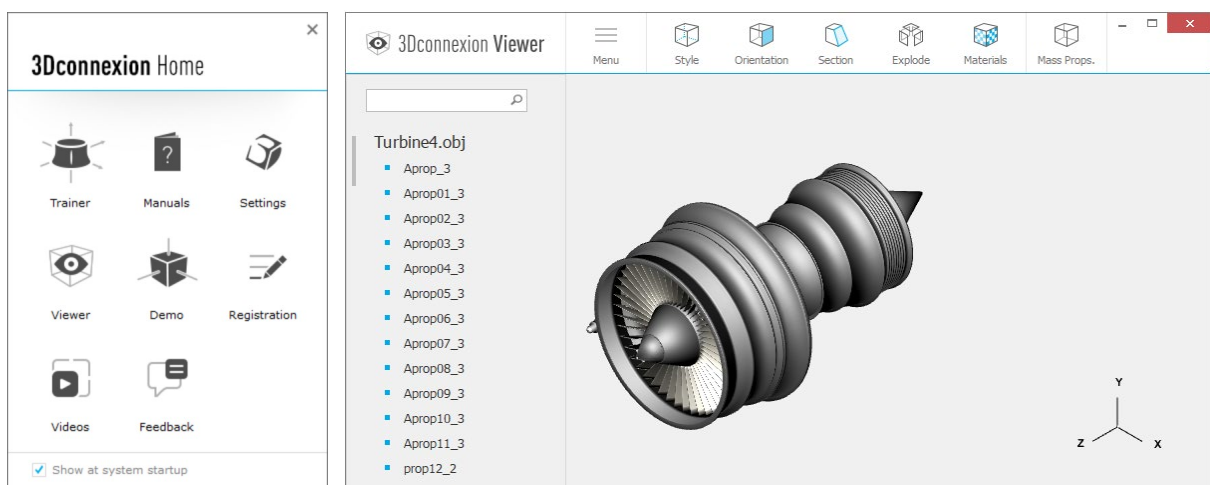
Videos:

Find instructive [videos](#) for your 3Dconnexion devices.



Feedback:

Provide [feedback](#) to the 3Dconnexion product team.



Technical Specifications

Dimensions & Weight

Width: 114 mm / 4.5"

Depth: 229 mm / 9.0"

Height: 16 mm / 0.6"

Weight: 250 g / 0.55 lb / 8.8 oz

Battery - 3Dconnexion Numpad Pro

Rechargeable lithium polymer battery with a capacity of 350 mAh

Supported Operating Systems

Microsoft Windows

[More information](#)

Package Contents

- 3Dconnexion Numpad Pro
- 3Dconnexion Cable USB-A / USB-C (1.5m)

Certifications and Registrations

CE, UKCA, EAC, FCC, IC, RCM, WEEE, REACH, RoHS-EU, RoHS-CN

[More information](#)

Warranty

3-year limited hardware warranty

Support

3dconnexion.com/support